



Minister's Order Pursuant to section 35(1) of "The Highways and Transportation Act, 1997"

Pursuant to section 35(1) of "*The Highways and Transportation Act, 1997*" it is hereby ordered that, effective as stated in this Order, **at 12:01 am, Friday May 1, 2026** or where it has been stated **effective immediately**. Vehicles other than those exempted in Part II, section 3 (2) and 3 (5) of "*The Vehicle Weight and Dimensions Regulations, 2010*", shall be restricted as follows:

Steering Axle

- 10.0 kg per mm (560 pounds per inch) width of tire (manufacturer's stamped dimension) to a maximum of
- 5,500 kg on the steering axle for a truck or truck tractor equipped with a single steering axle.
- 11,000 kg on the steering axle group for a truck or truck tractor equipped with a tandem axle steering group.

Other Axles

- 6.25 kg per mm (350 pounds per inch) width of tire (manufacturer's stamped dimension) to a maximum of:
- 1,650 kg (3,638 pounds) per tire, or
- 2,630 kg per tire for axles equipped with single tires with a width of 445 mm or greater.

This order does not permit the weight on any axle, axle group or vehicle from exceeding the maximum weight prescribed in the "*The Vehicle Weight and Dimension Regulations, 2010*" for that axle, axle group or vehicle.

The restriction does not apply to:

- Emergency vehicles,
- Ministry of Highways vehicles and municipal maintenance equipment when conducting maintenance or accessing sites on or along the restricted highway,
- SaskPower, SaskEnergy and SaskTel vehicles when accessing sites along the restricted route,
- Recreational vehicles,
- Buses,
- Farm Equipment operated or towed,
- Vehicles directly crossing a Provincial Highway at an intersecting public highway or private road.

Please note that some provincial highways and bridges are subject to special reduced or restricted weights and some are for specific periods of the year, some for precise temperatures. A detailed description of these special restrictions is listed on the last four pages of this Order.

The following Provincial Highways will be removed from Spring Road Restrictions at 12:01 am, Friday May 1, 2026.

- | | | | |
|--------|--------------------------------------------------------------------------------------------------|---------|------------------------------------------------------------------------------------|
| No. 2 | From U.S. Border to St. Victor Access | No. 99 | From Craven to Jct Hwy 6 |
| No. 13 | Cadillac to Junction 37 | No. 202 | Jct Hwy 2 to Buffalo Pound Park |
| No. 13 | North Jct Hwy 21 to Alberta Border | No. 220 | From Jct Hwy 20 to Jct 322 |
| No. 18 | From Jct Hwy 6 to East Jct Hwy 36 | No. 221 | Jct Hwy 21 to Cypress Hills Park Gate |
| No. 18 | From Jct Hwy 35 to Jct Hwy 6 | No. 271 | Maple Creek (Jct Hwy 21) to Fort Walsh |
| No. 18 | From West Jct Hwy 36 to Rockglen | No. 301 | From Jct Hwy 1 from 200 metres north of the bridge to Buffalo Pound Park |
| No. 18 | From Ponteix Grid to Jct. 13 at Robsart | No. 306 | From Jct Hwy 35 to Riceton |
| No. 18 | From Jct Hwy 2 to Ponteix Grid | No. 306 | From Riceton to Jct Hwy 6 (SPECIAL RESTRICTION – 8,000kgs) |
| No. 19 | From East Jct Hwy 42 to Elbow Access | No. 308 | From Jct Hwy 8 to Grid 600 (SPECIAL RESTRICTION – 8,000kgs) |
| No. 19 | From Jct Hwy 18 to North Jct Hwy 363 | No. 308 | From Grid 600 to Manitoba Border |
| No. 21 | U.S. Border to West Jct Hwy 13 | No. 318 | From 2 km N of Jct Hwy 18 to Jct Hwy 361 |
| No. 21 | East Jct Hwy 13 to Cypress Park Entrance | No. 321 | Liebenthal (Jct Hwy 21) to 7 km East of the Alberta Border |
| No. 21 | Jct Hwy 1 to 12 km South of Leader | No. 332 | Jct Hwy 32 to 7.1 km West of Jct Hwy 32 |
| No. 22 | From Earl Grey to Jct Hwy 20 | No. 332 | 7.1 km West of Jct Hwy 32 to Hazlet (SPECIAL RESTRICTION – 8,000kgs) |
| No. 28 | From Jct Hwy 18 to Jct Hwy 377 | No. 334 | From Jct Hwy 13 to 3.3 km south of Jct Hwy 339 (SEE SPECIAL RESTRICTION 8,000 Kgs) |
| No. 34 | From U.S. Border to Jct Hwy 13 | No. 339 | From Jct Hwy 334 to Jct Hwy 39 |
| No. 35 | From Jct Hwy 306 to Jct Hwy 33 | No. 343 | Jct Hwy 4 to Simmie |
| No. 35 | From Jct Hwy 33 to Jct Hwy 48 | No. 350 | From U.S. Border to Jct Hwy 18 |
| No. 35 | From Jct Hwy 48 to Jct Hwy 1 | No. 358 | From Wood Mountain to Limerick |
| No. 35 | From 3.8 km North of Jct Hwy 1 to Jct Hwy 10 | No. 361 | From Manitoba Border to Jct 9 |
| No. 36 | From U.S. Border to Jct Hwy 2 | No. 363 | From 43 km West of Moose Jaw to Neidpath |
| No. 37 | U.S. Border to Climax | No. 363 | Neidpath to Jct Hwy 4 |
| No. 37 | 2.35 km North of Gull Lake to Cabri | No. 364 | From Km 19.08 to Km 36.45 |
| No. 42 | From the Jct of 367 to the Jct North Jct of 19 | No. 367 | From Jct Hwy 42 to Jct Hwy 19 |
| No. 43 | From Jct Hwy 4 to Jct Hwy 19 | No. 371 | Jct Hwy 21 to Alberta Border (SPECIAL RESTRICTION – 8,000kgs) |
| No. 44 | From 3 km south-west of Davidson (Meridian Road) to Jct. Hwy 19 (SPECIAL RESTRICTION – 8,000kgs) | No. 377 | From Jct Hwy 28 to Jct Hwy 6 |
| No. 44 | South Jct Hwy 21 to 3.33 km West of Mantario (SPECIAL RESTRICTION – 8,000kgs) | No. 379 | McMahon to 14.66 km East of Junction Hwy 4 |
| No. 44 | 3.33 kms West of Mantario to Alsask | | |
| No. 47 | From Handsworth Road to Jct Hwy 1 | | |
| No. 58 | From Jct Hwy 18 to Jct Hwy 13 | | |
| No. 58 | From N limits of Gravelbourg to Jct Hwy 1 | | |

The following Access Roads will be removed from Spring Road Restrictions at 12:01 am, Friday May 1, 2026.

- | | | | |
|-------|------------------------------------------------------|--------|---------------------------------------------------|
| No. 1 | Sintaluta Access | No. 2 | Liberty Access |
| No. 1 | McLean Park Access | No. 2 | St. Victor Access |
| No. 1 | Grand Coulee Access (SPECIAL RESTRICTION – 8,000kgs) | No. 2 | Mossbank Access |
| No. 1 | Caron Access (SPECIAL RESTRICTION – 8,000kgs) | No. 4 | Blumehof Access (SPECIAL RESTRICTION – 8,000kgs) |
| No. 1 | Rush Lake Access | No. 4 | Rhineland Access |
| No. 1 | Waldeck Access | No. 8 | Tantallon Access (SPECIAL RESTRICTION – 8,000kgs) |
| No. 1 | Webb Access from Km 0 to 1.87 Km | No. 11 | Disley Access |
| No. 1 | Tompkins Access | No. 11 | Bethune Access |
| No. 1 | Piapot Access | No. 11 | Findlater Access |
| No. 2 | Sun Valley Beach Access | No. 11 | Findlater Service Road |
| No. 2 | Holdfast Access | No. 11 | Aylesbury Access |
| No. 2 | Penzance Access | No. 11 | Craik Access |

- | | | | |
|--------|-------------------------------------------------------|---------|----------------------------------------------------------------------------|
| No. 11 | Girvin Access | No. 21 | Mendham Access (Jct 21 to 8.1 KM West)
(SPECIAL RESTRICTION – 8,000kgs) |
| No. 11 | Davidson South | No. 22 | Dysart Access |
| No. 13 | Pangman Access | No. 22 | Earl Grey Service Road |
| No. 13 | Khedive Access | No. 33 | Osage Access Road |
| No. 13 | Trossachs Access | No. 33 | Kronau Service Access |
| No. 13 | Bellegarde Access (SPECIAL RESTRICTION –
8,000kgs) | No. 36 | Ormiston Access |
| No. 13 | Arcola Access | No. 39 | Mc Taggart Service Road |
| No. 13 | Forget Access (SPECIAL RESTRICTION –
8,000kgs) | No. 39 | Wilcox Service Road |
| No. 13 | Limerick Access | No. 39 | Roche Percee Access |
| No. 13 | Verwood Access | No. 42 | Marquis Access |
| No. 15 | Semans Access | No. 42 | Riverhurst Access |
| No. 18 | Beaubier Access | No. 42 | Tuxford Access |
| No. 18 | Gladmar Access | No. 43 | Palmer Access |
| No. 18 | Big Beaver Access | No. 48 | Fairlight Access |
| No. 18 | Fife Lake Access | No. 48 | Kendal Service Road |
| No. 18 | McCord Access | No. 48 | Odessa Service Road |
| No. 19 | Loreburn Access | No. 48 | Vibank Service Road |
| No. 19 | Elbow Access | No. 322 | Kanata Valley Access |
| No. 19 | Kincaid Access | No. 322 | Saskatchewan Beach Access |
| No. 20 | Duval Access | No. 363 | Coderre Access |
| No. 20 | Bulyea Access | No. 363 | Shamrock Access |
| No. 21 | Golden Prairie Access | No. 364 | Edenwold Access |

The following Rural Municipality will be removed immediately from Spring Road Restrictions upon posting this Order.

No. 79 ARLINGTON

The following Rural Municipality will be removed from Spring Road Restrictions at 12:01 am, Friday May 1, 2026.

- | | | | |
|--------|--------------------|---------|---------------|
| No. 6 | CAMBRIA | No. 76 | AUVERGNE |
| No. 7 | SOURIS VALLEY | No. 77 | WISE CREEK |
| No. 8 | LAKE ALMA | No. 94 | HAZELWOOD |
| No. 10 | HAPPY VALLEY | No. 95 | GOLDEN WEST |
| No. 11 | HART BUTTE | No. 96 | FILLMORE |
| No. 12 | POPLAR VALLEY | No. 97 | WELLINGTON |
| No. 17 | VAL MARIE | No. 102 | LAKE JOHNSTON |
| No. 38 | LAURIER | No. 103 | SUTTON |
| No. 40 | BENGOUGH | No. 104 | GRAVELBOURG |
| No. 42 | WILLOW BUNCH | No. 105 | GLEN BAIN |
| No. 43 | OLD POST | No. 106 | WHISKA CREEK |
| No. 45 | MANKOTA | No. 108 | BONE CREEK |
| No. 46 | GLEN MCPHERSON | No. 109 | CARMICHAEL |
| No. 49 | WHITE VALLEY | No. 110 | PIAPOT |
| No. 51 | RENO | No. 122 | MARTIN |
| No. 64 | BROCK | No. 123 | SILVERWOOD |
| No. 65 | TECUMSEH | No. 124 | KINGSLEY |
| No. 67 | WEYBURN | No. 125 | CHESTER |
| No. 68 | BROKENSHELL | No. 126 | MONTMARTRE |
| No. 69 | NORTON | No. 127 | FRANCIS |
| No. 72 | LAKE OF THE RIVERS | No. 128 | LAJORD |
| No. 73 | STONEHENGE | No. 130 | REDBURN |

No.	132	HILLSBOROUGH	No.	190	DUFFERIN
No.	133	RODGERS	No.	191	MARQUIS
No.	134	SHAMROCK	No.	193	EYEBROW
No.	135	LAWTONIA	No.	194	ENFIELD
No.	136	COULEE	No.	216	TULLYMET
No.	137	SWIFT CURRENT	No.	218	CUPAR
No.	141	BIG STICK	No.	219	LONGLAKETON
No.	151	ROCANVILLE	No.	220	MCKILLOP
No.	153	WILLOWDALE	No.	223	HURON
No.	154	ELCAPO	No.	224	MAPLE BUSH
No.	155	WOLSELEY	No.	229	MIRY CREEK
No.	156	INDIAN HEAD	No.	230	CLINTWORTH
No.	157	SOUTH QU'APPELLE	No.	231	HAPPYLAND
No.	158	EDENWOLD	No.	232	DEER FORKS
No.	159	SHERWOOD	No.	250	LAST MOUNTAIN VALLEY
No.	164	CHAPLIN	No.	252	ARM RIVER
No.	171	FOX VALLEY	No.	279	MOUNT HOPE
No.	187	NORTH QU'APPELLE	No.	261	CHESTERFIELD
No.	189	LUMSDEN	No.	380	TRAMPING LAKE

Signed on behalf of the Minister on this 28th day of April 2026.

Lana Eering
 Government of Saskatchewan
 Ministry of Highways
 Manager, Highway Hotline/Emergency Planning Officer

The following Provincial Highways are subject to Spring Road Restrictions.

- | | | |
|--------|---------------------------------------------------------------------------------------------------------------------------------|------------------------------------------------------------------------------------------------------------------------------------------------------------------------------------------------------------------------------------------------|
| No. 3 | From Manitoba Border to Hudson Bay | kg per mm (252 lbs/in) width of tire |
| No. 4 | From Jct Hwy 55 to Jct Hwy 224 | (manufacturer's stamped dimension) on any |
| No. 5 | From Manitoba Border to Jct Hwy 57 | wheel to a maximum GVW of 22,686 kg |
| No. 8 | From Norquay to 14.6 km. South of Forest Boundary (SPECIAL RESTRICTIONS -8,000kgs from Midnight Mar. 14 to Midnight Nov. 15) | (50,000 lbs), including the steering axle. |
| No. 9 | From Hudson Bay to Ruby Lake Access | No. 80 From K-1 Mine Access to Churchbridge |
| No. 15 | From Jct Hwy 16 to Jct Hwy 9 (SPECIAL RESTRICTION – 8,000kgs) | No. 80 From North town limits of Churchbridge to Jct Hwy 10 (SPECIAL RESTRICTION – 8,000kgs) |
| No. 15 | From Jct Hwy 2 to Farrerdale | No. 106 From Jct Hwy 928 to Creighton |
| No. 15 | From Farrerdale to Jct Hwy 11 | No. 123 From Jct Hwy 55 to E.B. Campbell Dam |
| No. 20 | From Middle Lake to Jct Hwy 320 | No. 155 From 7.0 km North of Jct Hwy 165 to La Loche |
| No. 20 | From 1.6 km North of Pilger to Middle Lake | No. 167 From Sturgeon Weir River to Creighton |
| No. 20 | From Jct Hwy 320 to Jct Hwy 3 | No. 167 From Denare Beach to Creighton |
| No. 22 | From Manitoba Border to South Jct Hwy 8 | No. 201 From 500 m North of Jct Hwy 1 to Jct Hwy 247 |
| No. 22 | From Jct Hwy 9 to Jct Hwy 47 | No. 211 From Jct Hwy 11 to Blackstrap |
| No. 22 | From Jct Hwy 47 to East Jct grid 617 | No. 212 From Jct Hwy 11 to Fort Carlton Park |
| No. 24 | From 11 km North of Spiritwood to Leoville | No. 225 From Jct Hwy 2 to east border of NE-7-44-27-W2 |
| No. 24 | From Leoville to Chitek Lake | No. 225 From Jct Hwy 312 to east border of NE-11-44-28-W2 |
| No. 25 | From Jct Hwy 3 to Jct Hwy 2 | No. 225 From east border of NE-7-44-27-W2 (east of St. Isidore-de-Bellevue) to east border of NE-11-44-28-W2 (MO/3-969-2021-WI1) is 9-month primary. |
| No. 26 | From 14 km North of Jct Hwy 304 to South Jct of 55 and 26 south of Peerles | No. 229 From Jct Hwy 9 to Jct Hwy 47 |
| No. 30 | From Eston Regional Park to Brock (SPECIAL RESTRICTION – 8,000kgs) | No. 240 From Jct Hwy 55 to Prince Albert National Park SPECIAL RESTRICTIONS – 4.5 kg per mm (252 lbs/in) width of tire (manufacturer's stamped dimension) on any wheel to a maximum GVW of 22,686 kg (50,000 lbs), including the steering axle |
| No. 31 | From Jct Hwy 4 to 23.1 km west (SPECIAL RESTRICTION – 8,000kgs) | No. 247 From Jct Hwy 9 to Jct Hwy 47 |
| No. 31 | From Herschel to grid 656 | No. 255 From Jct Hwy 55 to Tobin Lake |
| No. 31 | From 29.6 km East of Plenty to Plenty (SPECIAL RESTRICTION – 8,000kgs) | No. 307 From Jct Hwy 7 to 13 km North of Jct Hwy 7 |
| No. 35 | From White Fox to Roads End | No. 310 From Jct Hwy 52 to Grid 743 |
| No. 42 | From Riverhurst Ferry to Jct Hwy 373 | No. 310 From Jct Grid 743 to Jct Hwy 16 (SPECIAL RESTRICTION – 8,000kgs) |
| No. 42 | From Jct Hwy 373 to Lucky Lake (SPECIAL RESTRICTION – 8,000kgs) | No. 310 From Jct Hwy 16 to Jct Hwy 5 |
| No. 42 | From Lucky Lake to Jct Hwy 342 | No. 312 From Wakaw to Rosthern |
| No. 42 | From its Jct with Hwy 44 (km 43.68) to its Jct with Hwy 15 (km 59.92), for a total of 16.2 km. (SPECIAL RESTRICTION – 8,000kgs) | No. 317 From Jct 51 to 12 KM North |
| No. 42 | From Jct Hwy 342 to Dinsmore | No. 320 From Jct Hwy 20 to Domremy |
| No. 44 | From Jct Hwy 19 to Danielson Provincial Park Access (SPECIAL RESTRICTION – 8,000kgs) | No. 302 From Weldon Ferry to 21 km East of Prince Albert (SPECIALRESTRICTION – 8,000kgs) |
| No. 44 | From Hwy 44 from 1.12km west of the Junction of Hwy 219 to Hwy 45 | No. 324 From Jct Hwy 378 to Mayfair |
| No. 44 | From Dinsmore east to Macrorie | No. 340 From Radisson to Hafford |
| No. 44 | From Dinsmore to Jct Hwy 4 | No. 342 From Jct Hwy 42 to Jct Hwy 4 |
| No. 44 | From 3.2 Km's West of Eston to N. Jct. of 21 | No. 342 From Jct Hwy 4 to Grid 647 (north of Lacadena) (SPECIAL RESTRICTION – 8,000kgs) |
| No. 45 | From Birsay to Jct Hwy 15 | No. 355 From Meath Park to Sturgeon Lake Reserve |
| No. 45 | From 8 kms South of Swanson to Delisle | No. 349 From Jct Hwy 35 to 15 km East of Naicam |
| No. 47 | From Willowbrook to Buchanan | |
| No. 47 | From 1 km North of Buchanan to Preeceville | |
| No. 52 | From Willowbrook to Homefield | |
| No. 52 | From Homefield to Jct Hwy 15 | |
| No. 55 | (old Hwy 55) From Jct Hwy 55 to 3 km West (Marchant Grove) Special Restrictions – 4.5 | |

No. 357 From Togo to Jct Hwy 8
No. 365 From Manitou Beach to Plunkett
No. 373 From Jct Hwy 42 to Birsay
No. 374 From Jct Hwy 14 to Tramping Lake
No. 376 From Asquith to Jct Hwy 40

No. 378 From Jct Hwy 4 to Jct Hwy 324
No. 378 From Jct Hwy 324 to Spiritwood
No. 908 From Jct Hwy 155 to Ile-a-la-Crosse
No. 953 From Jct Hwy 2 to Jct Hwy 263

The following Access Roads are subject to Spring Road Restrictions

No. 2 Imperial Access
No. 2 Simpson Access
No. 2 Meacham Access
No. 2 Dana Access
No. 2 Wakaw Lake Park Access
No. 2 Cudworth Access
No. 2 Weyakwin Access
No. 2 Ramsey Bay Access
No. 2 Paddockwood Access (SPECIAL RESTRICTION – 8,000kgs)
No. 3 Prairie River Access
No. 3 Crooked River Access
No. 3 Eldersley Access
No. 3 Valparaiso Access
No. 3 Weldon Access
No. 3 Brancepeth Access
No. 3 30 Metres N of the railway crossing at Birch Hills
No. 3 Shell Lake Access
No. 3 Medstead Access
No. 3 Monte Nebo Access
No. 3 Turtle Lake South Bay Access
No. 4 Cando Access
No. 4 Metinota Access
No. 4 Aquadeo Access
No. 4 Meadow Lake Airport – 220 meters West of Jct Hwy 4(Meadow Lake Urban Limits) to Meadow Lake Airport
No. 5 From Leroy to 6.45 kms West
No. 5 Veregin Access
No. 5 Mikado Access
No. 5 Kuroki Access
No. 5 St. Gregor Access
No. 5 Peterson Access
No. 5 St. Denis Access
No. 6 Lac Vert Access
No. 6 Pleasantdale Access
No. 6 Fairy Glen Access
No. 8 Wroxton Access
No. 9 Dubuc Access
No. 9 Crystal Lake Access
No. 9 Ebenezer Access
No. 9 Endeavour Access
No. 9 Gorlitz Access
No. 9 Tadmore Access
No. 11 Kenaston bypass/alternate

No. 11 Hanley Access
No. 11 Dundurn Access
No. 11 Gruenthal Access
No. 11 Blumenthal Access
No. 11 Neunlage Access
No. 11 Macdowell Access
No. 12 Hepburn Access (SPECIAL RESTRICTION – 8,000kgs)
No. 12 Gruenfeldt Access
No. 12 Waldheim Access (SPECIAL RESTRICTION – 8,000kgs)
No. 14 Senlac Access
No. 15 Service Road – All thin membrane surfaced roads from Fenwood to Leross
No. 15 Punnichy Access
No. 15 Conquest Access
No. 15 Milden Access
No. 15 Sovereign Access
No. 16 Jansen Access
No. 16 Guernsey Access
No. 16 Plunkett Access
No. 16 Viscount Access
No. 16 Bradwell Access (SPECIAL RESTRICTION – 8,000kgs)
No. 16 Dalmeny Access from Jct 16 to Jct 305
No. 19 Strongfield Access
No. 19 Hawarden Access
No. 20 Middle Lake Access
No. 20 St. Benedict Access
No. 20 Tway Access
No. 22 Atwater Access
No. 22 Grayson Access
No. 22 Gerald Access
No. 23 Caragana Access
No. 23 Zenon Park Access
No. 23 Weekes Access
No. 25 Birch Hills Access
No. 25 Hagen Access
No. 27 Aberdeen Access
No. 31 Herschel Access
No. 35 Wishart Access
No. 35 Sylvania Access
No. 35 Ridgedale Access
No. 35 Aylsham Access (SPECIAL RESTRICTION – 8,000kgs)
No. 40 Speers Access

- | | | | |
|--------|-------------------------------------------------------------------|---------|---------------------------------------------------------|
| No. 40 | David Laird Campground Access (YEAR ROUND RESTRICTION – 8,000kgs) | No. 55 | Love Access |
| No. 40 | Leask Access | No. 55 | Garrick Access |
| No. 40 | Marcelin Access | No. 55 | Choiceland Access |
| No. 41 | Hwy 41 North to Aberdeen | No. 55 | Snowden Access |
| No. 44 | Plato Access | No. 80 | Yarbo Access |
| No. 44 | Glidden Access | No. 123 | Cumberland House Bridge to the Cumberland House Airport |
| No. 45 | Coteau Beach Access | No. 155 | Buffalo Narrows Airport |
| No. 49 | Hazel Dell Access | No. 219 | Glenside Access |
| No. 49 | Hyas Access | No. 219 | Riverside Estate Access |
| No. 49 | Stenen Access | No. 219 | Furdale Access |
| No. 51 | Handel Access | No. 312 | Laird Access (SPECIAL RESTRICTION – 8,000kgs) |
| No. 51 | Ruthilda Access | No. 349 | Saint-Front Access |
| No. 51 | Major Access | | |

The following Rural Municipalities are subject to Spring Road Restrictions.

- | | | | |
|---------|-------------------|---------|--------------|
| No. 184 | GRAYSON | No. 315 | MONTROSE |
| No. 214 | CANA | No. 314 | DUNDURN |
| No. 215 | STANLEY | No. 321 | PRAIRIEDALE |
| No. 217 | LIPTON | No. 331 | LIVINGSTON |
| No. 225 | CANAAN/LUCKY LAKE | No. 333 | CLAYTON |
| No. 226 | VICTORY | No. 334 | PREECEVILLE |
| No. 241 | CALDER | No. 335 | HAZEL DELL |
| No. 243 | WALLACE | No. 336 | SASMAN |
| No. 244 | ORKNEY | No. 338 | LAKESIDE |
| No. 245 | GARRY | No. 339 | LEROY |
| No. 246 | ITUNA BON ACCORD | No. 340 | WOLVERINE |
| No. 247 | KELLROSS | No. 341 | VISCOUNT |
| No. 248 | TOUCHWOOD | No. 343 | BLUCHER |
| No. 251 | BIG ARM | No. 344 | CORMAN PARK |
| No. 255 | COTEAU | No. 345 | VANSCOY |
| No. 256 | KING GEORGE | No. 346 | PERDUE |
| No. 260 | NEWCOMBE | No. 347 | BIGGAR |
| No. 271 | COTE | No. 349 | GRANDVIEW |
| No. 273 | SLIDING HILLS | No. 350 | MARIPOSA |
| No. 274 | GOOD LAKE | No. 351 | PROGRESS |
| No. 275 | INSINGER | No. 352 | HEART'S HILL |
| No. 276 | FOAM LAKE | No. 366 | KELVINGTON |
| No. 277 | EMERALD | No. 368 | SPALDING |
| No. 280 | WREFORD | No. 369 | ST. PETER |
| No. 281 | WOOD CREEK | No. 370 | HUMBOLDT |
| No. 282 | MCCRANEY | No. 371 | BAYNE |
| No. 283 | ROSEDALE | No. 373 | ABERDEEN |
| No. 284 | RUDY | No. 376 | EAGLE CREEK |
| No. 285 | FERTILE VALLEY | No. 377 | GLENSIDE |
| No. 301 | ST. PHILIPS | No. 378 | ROSEMOUNT |
| No. 303 | KEYS | No. 379 | REFORD |
| No. 304 | BUCHANAN | No. 381 | GRASS LAKE |
| No. 305 | INVERMAY | No. 382 | EYE HILL |
| No. 307 | ELFROS | No. 394 | HUDSON BAY |
| No. 309 | PRAIRIE ROSE | No. 395 | PORCUPINE |
| No. 312 | MORRIS | No. 398 | PLEASANTDALE |

No.	399	LAKE LENORE	No.	460	BIRCH HILLS
No.	400	THREE LAKES	No.	463	DUCK LAKE
No.	401	HOODOO	No.	464	LEASK
No.	402	FISH CREEK	No.	466	MEETING LAKE
No.	403	ROSTHERN	No.	467	ROUND HILL
No.	404	LAIRD	No.	468	MEOTA
No.	405	GREAT BEND	No.	486	MOOSE RANGE
No.	406	MAYFIELD	No.	487	NIPAWIN
No.	409	BUFFALO	No.	488	TORCH RIVER
No.	410	ROUND VALLEY	No.	490	GARDEN RIVER
No.	411	SENLAC	No.	491	BUCKLAND
No.	427	TISDALE	No.	493	SHELLBROOK
No.	428	STAR CITY	No.	494	CANWOOD
No.	429	FLETT'S SPRINGS	No.	496	SPIRITWOOD
No.	430	INVERGORDON	No.	497	MEDSTEAD
No.	431	ST. LOUIS	No.	498	PARKDALE
No.	435	REDBERRY	No.	501	FRENCHMAN BUTTE
No.	436	DOUGLAS	No.	520	PADDOCKWOOD
No.	437	NORTH BATTLEFORD	No.	521	DISTRICT OF LAKELAND
No.	438	BATTLE RIVER	No.	555	BIG RIVER
No.	440	HILLSDALE	No.	561	LOON LAKE
No.	457	CONNAUGHT	No.	588	MEADOW LAKE
No.	459	KINISTINO	No.	622	BEAVER RIVER

Please note that some provincial highways and bridges are subject to special reduced or restricted weights and some are for specific periods of the year, some for precise temperatures. A detailed description of these special restrictions is listed on the last four pages of this Order.

**The following section is not part of the Order but is appended as INFORMATION:
Special Weight Restrictions on Selected Provincial Highways.**

The following highways are subject to reduced weights, year-round, by regulation in accordance with the *Vehicle Weight and Dimension Regulations, 2010*

Hwy	Bridge Location Description
2	Bridge over West Poplar Creek from Southern Bridge Abutment to Northern Bridge Abutment. Bridge is located approximately 1.1 km north of the Canada/U.S.A. border.

Hwy	From	To	Description
955	South abutment of the Douglas River Bridge	Northern most limit of Highway 955	Maximum GVW 41 500 kg

The following BRIDGES are restricted by Minister's ORDER to a maximum gross vehicle weight of Secondary Weights year-round. Winter Weights are not allowed.

Hwy	Bridge Location Description
2	Bridge over Little Red River from Southern Bridge Abutment to Northern Bridge Abutment. Bridge is located approximately 4.4 km south of Jct. with Hwy 355 and Hwy 2 near Spruce Home. Bridge is located on East Frontage Road.
3	Bridge over Red Deer River from Eastern Bridge Abutment to Western Bridge Abutment located approximately .5km west of Erwood, Sk.
4 Metinota Access	Bridge over Jackfish Narrows from Eastern Bridge Abutment to Western Bridge Abutment. Bridge is located in access road approximately 3.1km west of the Jct. with Hwy 4. (Bridge is located on access road).
312 Gabriel Dumont Bridge	Truss Bridge over South Saskatchewan River from Eastern Bridge Abutment to Western Bridge Abutment.
919	Bridge over Martineau River from Southern Bridge Abutment to Northern Bridge Abutment. Bridge is located approximately 39.5km northwest of the Jct. with Hwy 21 and Hwy 950
925 Dillion River	Bridge over Dillion River from the Eastern Bridge Abutment to Western Bridge Abutment. Bridge is located approximately 0.25 east of Northern Hamlet of St. George's Hill.
935	Bridge over Morin River from the Southern Bridge Abutment to the Northern Bridge Abutment. Bridge is located approximately 7km north of the Jct. with Hwy 165 and Hwy 935.
955 Clearwater Truss Bridge	Truss Bridge over Clearwater River from Southern Bridge Abutment to Northern Bridge Abutment. Bridge is located approximately - 62 km north of Jct 155 and 955 to the Clearwater Bridge.
980 Elbow Lake Access	Bridge over Midnight Creek from Eastern Bridge Abutment to Western Bridge Abutment. Bridge is located approximately .3 km west of Elbow Lake, Sk. The bridge is located on Spirit Lake/Elbow Lake access road.

The following BRIDGES are restricted by Minister's ORDER to a maximum gross vehicle weight of Primary Weights year-round. Winter Weights are not allowed.

Hwy	Bridge Location Description
2	Southbound Bridge over Hwy 1 from Southern Bridge Abutment to Northern Bridge Abutment. Bridge is located north of Moose Jaw Sk. at Jct with Hwy 1 and Hwy 2
6	Bridge over Barrier River Overflow from Southern Bridge Abutment to Northern Bridge Abutment. Bridge is located approximately 25.7 km south of Melfort, Sk.
903	Bridge over Beaver River. The bridge is located approximately 16.4 km north of the Jct. with Highway 55.

The following highways are restricted by Minister's ORDER to a maximum gross vehicle weight of 8 000 kilograms year-round.

Highway	From	To
1 Caron Access	Jct Hwy 1	Hamlet of Caron
1 Grand Coulee Access	Jct Hwy 1	Village of Grand Coulee
2 Eastside Service Road near Prince Albert	Jct Boundary Street East Service Rd north	Jct Township Road (approx. 2.4 kms)
4 Blumenhof Access	Jct Hwy 4 east	Blumenhof
6 Leroy Access	Jct Hwy 6	Town of Leroy
8 Tantallon Access	Jct. Hwy 8	Village of Tantallon
12 Hepburn Access	Jct. Hwy 12	Village of Hepburn
12 Waldheim Access	Jct. Hwy 12	100 meters west of the west boundary of NW 15-42-5 W3M in the town of Waldheim.
13 Bellegarde Access	Jct. Hwy 13	Bellegarde
13 Forget Access	Jct. Hwy 13	The Village of Forget
15	Jct. Hwy 16	Jct. Hwy 9
16 Bradwell Access	Jct. Hwy 16	Village of Bradwell
21 Mendham Access	Jct Hwy 21 Mendham Access	Intersection with the North-South portion of the Municipal Alternate Truck Route
30	Eston Regional Park located at the southwest corner of Section 20, Township 23, Range 20, West 3rd Meridian	The jct. of municipal Hwy located at the north-east corner of Section 34, Township 28, Range 20, West 3rd Meridian
31	Jct. Hwy 4	Herschel Access Road
31	Grid 656 at NW corner of Section 34, Township 31, Range 17, west of the 3rd Meridian	The intersection of the Plenty grid at the NW corner, Section 21, Township 32, Range 19, west of the 3rd Meridian
39 Bienfait Access	Jct Hwy 39	Jct Hwy 18 (In the Town of Bienfait)
40 David Laird Campsite Road	Jct No. Hwy 40	Jct Hwy No. 16
41 Alvena Access	Jct Hwy 41	2nd Avenue in Village of Alvena
42	Jct Hwy 42 - Keeler Service Road/Railway Ave. S.	Keeler Service Road/Railway Ave. to RM Road 643
42	Jct Hwy 373	Jct Hwy 45 in the Town of Lucky Lake
42	From its Jct with Hwy 44 (km 43.68)	its Jct with Hwy 15 (km 59.92), for a total of 16.2 km.
44	Jct Hwy 19	Junction with the Danielson Provincial Park Access located in the southeast of Section 32, Township 26, Range 6, West of the 3rd Meridian.

44	Jct Hwy 21	Westerly to the Jct with the municipal road located in the NE 1/4 of Section 24, Township 26, Range 27, west of the 3rd Meridian
44	Jct with the municipal road located at the SW 1/4 of Section 26, Township 26, Range 27, west of the 3rd Meridian	Jct with the municipal road located east of Section 31, Township 26, Range 27, west of the 3rd Meridian
306	Riceton	Jct Hwy 6
308	Jct Hwy 8	Jct with Primary Grid 600
310	Jct of Grid 743	Jct of Hwy No. 16
312 Laird Access	Jct Hwy 312	The Village of Laird
332	7.1 km west of Jct Hwy 32	The Village of Hazlet except for that portion between the east and west Jct of Hwy 37
334	Jct Hwy 13	3.3 km south of Jct Hwy 339
342	Jct Hwy 4	Jct of Primary Grid 647 north of Lacadena
371	Jct Hwy 21	Alberta Border

The following highways are restricted by Minister's ORDER to a maximum gross vehicle weight of 8 000 kilograms from March 1st to November 30th each year.

Hwy	From	To
302	Cecil Ferry Road at the SE corner of Section 22, Township 48, Range 24, west of the 2nd Meridian	Jct of the municipal road located at SE corner of Section 5, Township 49, Range 22, west of Second Meridian (located by the Weldon Ferry)

The following access road is restricted by Minister's ORDER to a maximum gross vehicle weight of 8 000 kilograms from March 1st to November 30th each year.

Hwy	From	To
2 Paddockwood Access	Jct Hwy 2	Grid Road intersection NE Section 23, Township 52, Range 25, W2nd Meridian

The following highway is restricted by Minister's ORDER to a maximum gross vehicle weight of 8 000 kilograms from March 15th to November 15th each year and when the ambient temperature is above -6°C.

Hwy	From	To
8	0.5 km North of Junction Highway 49 at Norquay	The community of Swan Plain at the south boundary of SE 27-36-1-W2M

The following Access Road is restricted by Minister's ORDER to a maximum gross vehicle weight of 8 000 kilograms from February 24 to November 15th each year and when the ambient temperature is above -6°C.

Hwy	From	To
35 Aylsham Access	Hwy 35 (NW corner of section 32, township 48, range 14, west of second Meridian)	Aylsham (NE corner of section 34, township 48, range 13, west of second Meridian)

The following highway is restricted by Minister's ORDER to a maximum gross vehicle weight of 75% of primary highway weights, except during winter weight season, when winter secondary weights shall apply.

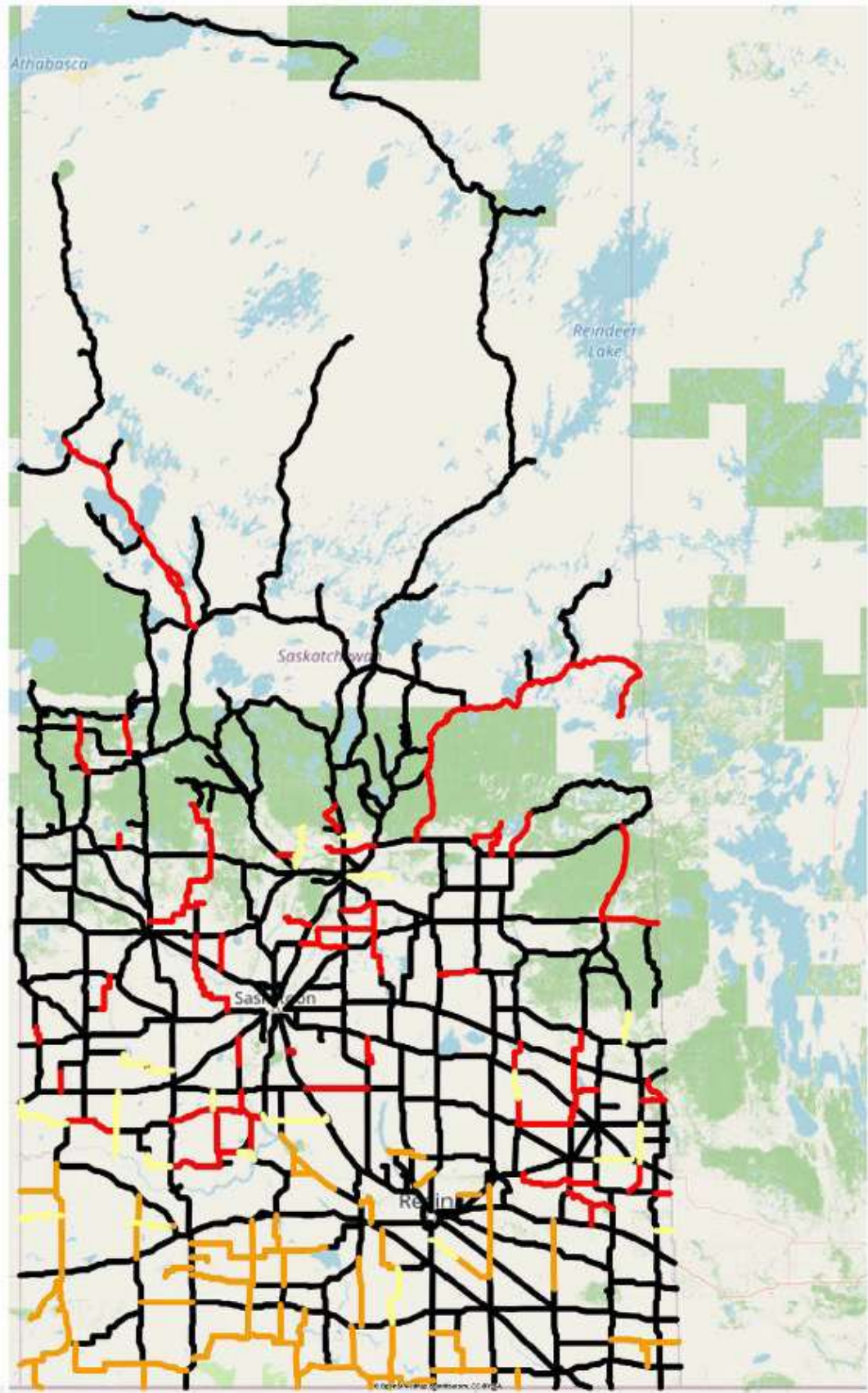
Hwy	From	To
240	Junction Highway 55	No. 240 - From Jct Hwy 55 to Prince Albert National Park SPECIAL RESTRICTIONS – 4.5 kg per mm (252 lbs/in) width of tire (manufacturer's stamped dimension) on any wheel to a maximum GVW of 22,686 kg (50,000 lbs), including the steering axle.

For detailed information on Rural Roads, call the local rural municipality or for Provincial Highway information email the Highway Hotline hotline@gov.sk.ca. The rural municipality administers and maintains the alternate haul routes. They are also responsible for issuing any overweight permits associated with the alternate haul routes.

Saskatchewan Ministry of Highways and Infrastructure provides seasonal highway restriction information on the Internet at: <http://www.saskatchewan.ca/truckingweights> under Special Weights.

Truckers can also contact the Saskatchewan Ministry of Highways, Trucking inquiry line at Toll free in Saskatchewan: 1-866-933-5290 Out of Saskatchewan: 306-933-5290 email: mhitrucking@gov.sk.ca

Saskatchewan Spring Road Restriction 2026 - Order 12



Spring Weight Season

- No Restrictions
- Restricted
- Future Changes/Restrictions

Special Weight Restrictions

- Special Weight Restrictions

Note:
This map is for quick reference, please refer to the above Order for the exact location.