

## WINTER WEIGHT SEASON 2024-2025

Twenty-eighth Order –2025

Minister's Order Pursuant to section 35 of The Highways and Transportation Act, 1997, The Vehicle Weight and Dimension Regulations, 2010, permit heavier weights on public highways during the Winter Weight Season.

The Winter Weight Season is defined in s. 2 (ggg) of the regulations as commencing on November 16 of each year and ending on March 14 of the following year.

Section 2(2) of the regulations states that if the Minister considers it necessary to protect a public highway, the Minister may issue an order under section 35 of the Act restricting the Winter Weight Season for the highways mentioned in the order for the period specified in the order.

Pursuant to section 35 of "The Highways and Transportation Act, 1997" it is hereby ordered that,  
**effective 12:01 am Friday 21<sup>st</sup> February 2025.**

*No changes from the previous Winter Weight Order 27.*

Signed on behalf of the Minister on this 18<sup>th</sup> day of February 2025.



Lana Eering  
Government of Saskatchewan  
Ministry of Highways  
Manager, Highway Hotline/Emergency Planning Officer

## WINTER WEIGHT SEASON 2024-2025

### MINISTER'S ORDER No: 80-2024-WI2-PILOT

#### ORDER for Increasing Weight Designation on Provincial Highway No. 80.

Pursuant to section 35.1 of *The Highways and Transportation Act, 1997*, the Minister hereby Orders: effective each year during the officially designated winter weight season for the Yorkton District effective until March 15, 2027; this Order authorizes any person, vehicle or class of vehicles to operate at the weights set for primary highways by *The Vehicle Weight and Dimension Regulations, 2010*, on Provincial Highway No. 80 from its junction with Provincial Highway No. 16 to its junction with Provincial Highway No. 10.

Outside of the designated winter weight season Provincial Highway No. 80 will revert back to a 8,000 kilogram restriction by Minister's Order signed July 6, 2001.

**The 15 Kilometre Rule does not apply under the Order.**

### MINISTER'S ORDER No: 49-2024-WI3-PILOT

#### ORDER for Increasing Weight Designation on Provincial Highway No. 49.

Pursuant to section 35.1 of *The Highways and Transportation Act, 1997*, the Minister hereby Orders: effective beginning December 15, 2024 and ending March 15, 2025,

- beginning June 15 2025 and ending March 15, 2026,
- beginning June 15 2026 and ending March 15, 2027,
- beginning June 15 2027 and ending March 15, 2028,
- and beginning June 15 and ending March 15, 2029.

this Order authorizes any person, vehicle or class of vehicles to operate at the weights set for primary highways *The Vehicle Weight and Dimension Regulations, 2010*, on Provincial Highway No. 49 from its junction with Provincial Highway No. 8, near Pelly, eastward to the Saskatchewan/Manitoba provincial border.

**The 15 Kilometre Rule does not apply under the Order.**

#### The Winter Weight Season **is in effect** for the following Provincial Highways:

No. 1	From Manitoba Border to Alberta Border	No. 10	From Manitoba Border to Balcarres
No. 2	From Weyakwin to La Ronge	No. 10	From Balcarres to Balgonie
No. 2	From St. Louis to Weyakwin	No. 11	From MacDowall to Prince Albert
No. 2	From Liberty to St. Louis	No. 11	From Davidson to MacDowall
No. 2	From Rockglen to Liberty	No. 11	From Regina to Davidson
No. 2	From U.S. Border to Rockglen	No. 12	From Blaine Lake to Shell Lake
No. 3	From Manitoba Border to Kinistino	No. 12	From Saskatoon to Blaine Lake
No. 3	From Kinistino to Jct Hwy 4	No. 13	From Manitoba Border to East Jct Hwy 36
No. 3	Jct Hwy 4 to Jct Hwy 26	No. 13	From East Jct 36 to Limerick
No. 3	Jct Hwy 26 to Jct Hwy 17	No. 13	From Limerick to Alberta Border
No. 4	From Glaslyn to Jct Hwy 224	No. 14	From Saskatoon to Asquith
No. 4	From Saskatchewan Landing to Glaslyn	No. 14	From Asquith to Alberta Border
No. 4	From U.S. Border to Saskatchewan Landing	No. 15	From Jct Hwy 9 to Jct Hwy 6
No. 5	From Manitoba Border to Quill Lake	No. 15	From Jct Hwy 20 to Jct Hwy 4
No. 5	From Quill Lake to Saskatoon	No. 15	From Jct Hwy 42 to Jct Hwy 4
No. 6	From Naicam to Jct Hwy 55	No. 15	From Raymore to Jct Hwy 20
No. 6	From Raymore to Naicam	No. 16	From Manitoba Border to Dafoe
No. 6	From U.S. Border to Raymore	No. 16	From Jct Hwy 6 to Langham
No. 7	From Saskatoon to Alberta Border	No. 16	From Langham to Lloydminster
No. 7	From Saskatoon to Delisle	No. 17	From Jct Hwy 14 to Onion Lake
No. 7	From Delisle to Alberta Border	No. 18	From Manitoba Border to Jct Hwy 39
No. 8	From South Jct 22 to Forest Boundary* (Norquay to Swan Plain – 8,000 kgs if above -6o)	No. 18	From Jct Hwy 47 to North Jct Hwy 6
No. 8	From U.S. Border to North Jct Hwy 22	No. 18	From South Jct Hwy 6 to East Jct Hwy 36
No. 9	From Jct Hwy 983 to Manitoba Border	No. 18	From West Jct Hwy 36 to Rockglen
No. 9	From Jct 1 to Jct Hwy 983	No. 18	From Jct Hwy 2 to Val Marie
No. 9	From U.S. Border to Jct Hwy 1	No. 18	From Jct Hwy 4 to Jct Hwy 13
		No. 19	From Jct Hwy 44 to Jct Hwy 15

## WINTER WEIGHT SEASON 2024-2025

- No. 19 From Chaplin to Jct Hwy 44
- No. 19 From Jct Hwy 18 to Jct Hwy 1
- No. 20 From Jct Hwy 320 to Jct Hwy 3
- No. 20 From South Jct Hwy 15 to Jct Hwy 320
- No. 20 From Lumsden to South Jct Hwy 15
- No. 21 From South Jct Hwy 303 to Meadow Lake Park
- No. 21 From Glidden to South Jct Hwy 303
- No. 21 From U.S. Border to Jct Hwy 44
- No. 22 From Manitoba Border to Jct Hwy 10
- No. 22 From Jct Hwy 35 to Jct Hwy 20
- No. 23 From Jct Hwy 9 to Somme
- No. 23 From Jct Hwy 38 to Jct Hwy 55
- No. 23 From Somme to Jct Hwy 38
- No. 24 From Spiritwood to Chitek Lake
- No. 25 From Jct Hwy 3 to Jct Hwy 2
- No. 26 From Vawn to Goodsoil
- No. 26 From Jct Hwy 4 to Vawn
- No. 27 From Jct Hwy 2 to Jct Hwy 41
- No. 28 From Jct Hwy 18 to Jct Hwy 13
- No. 29 From Wilkie to Battleford
- No. 31 From Herschel Access to Grid 656
- No. 31 From Plenty to Jct Hwy 14
- No. 32 From Jct Hwy 1 to Leader
- No. 33 From Stoughton to Sedley
- No. 33 From Sedley to Regina
- No. 34 From U.S. Border to Jct Hwy 13
- No. 35 From Jct Hwy 349 to Roads End
- No. 35 From Lipton to Jct Hwy 349
- No. 35 From U.S. Border to Lipton
- No. 36 From U.S. Border to West Jct Hwy 18
- No. 36 From Jct Hwy 13 to Jct Hwy 2
- No. 37 From U.S. Border to Cabri
- No. 38 From Jct Hwy 5 to Jct Hwy 23
- No. 39 From U.S. Border to Jct Hwy 1
- No. 40 From Jct Hwy 3 to Blaine Lake
- No. 40 From Blaine Lake to Alberta Border
- No. 41 From Melfort to Jct Hwy 20
- No. 41 From Jct Hwy 20 to Jct Hwy 5
- No. 42 From Diefenbaker Lake to Jct Hwy 342
- No. 42 From Jct 342 to Dinsmore
- No. 42 From Jct Hwy 2 to Diefenbaker Lake
- No. 43 From Jct Hwy 2 to Jct Hwy 4
- No. 44 From Jct Hwy 19 to East Jct Hwy 42
- No. 44 From Dinsmore to South Jct Hwy 21
- No. 44 From 31.7 kms East of Alsask to Jct Hwy 7 @  
Alsask
- No. 45 From Lucky Lake to Delisle
- No. 46 From Balgonie to Regina
- No. 47 From Jct Hwy 247 to Preeceville
- No. 47 From U.S. Border to Jct Hwy 247
- No. 48 From Manitoba Border to Jct Hwy 9
- No. 48 From Jct Hwy 9 to White City
- No. 49 From Manitoba Border to Jct Hwy 35
- No. 51 From Jct Hwy 4 to Alberta Border
- No. 52 From Yorkton to Jct Hwy 15
- No. 54 From Jct Hwy 11 to Regina Beach
- No. 55 From Jct Hwy 9 to Smeaton
- No. 55 From Smeaton to Green Lake
- No. 55 From Green Lake to Alberta Border
- No. 56 From Indian Head to Katepwa
- No. 56 From Katepwa to Jct Hwy 210
- No. 57 From Manitoba Border to Jct Hwy 5
- No. 58 From Jct Hwy 18 to Jct Hwy 43
- No. 58 From North Limits of Gravelbourg to Jct Hwy 1
- No. 60 From Pike Lake to Jct Hwy 7
- No. 80 From Esterhazy to Churchbridge
- No. 99 From Craven to Jct Hwy 6
- No. 102 From La Ronge to Southend
- No. 106 From Jct Hwy 55 to Creighton
- No. 120 From Jct Hwy Hwy 913- Jct Hwy 106
- No. 120 From Jct Hwy 913 to Jct Hwy 55
- No. 123 From Jct Hwy 55 to Cumberland House
- No. 135 From Jct Hwy 106 to Sandy Bay
- No. 155 From Green Lake to La Loche
- No. 165 From Jct Hwy 106 to North Jct Hwy 2
- No. 165 From South Jct Hwy 2 to 38 KM East of Jct  
Hwy 155
- No. 165 From 38 KM East of Jct Hwy 155 to Jct Hwy 155
- No. 167 From Sturgeon Weir River to Creighton
- No. 201 From Jct Hwy 1 to Jct Hwy 247
- No. 202 From Jct Hwy 2 to Buffalo Pound Park
- No. 209 From Jct Hwy 9 to 5 km West
- No. 210 From Fort Qu'Appelle to Jct Hwy 10
- No. 211 From Jct Hwy 11 to Blackstrap Prov. Park
- No. 212 From Jct Hwy 11 to Fort Carlton Park
- No. 220 From Jct Hwy 20 to Rowan's Ravine Park
- No. 221 From Jct Hwy 21 to Cypress Hills Park Gate
- No. 224 From Jct Hwy 4 to Jct Hwy 26
- No. 225 From Jct Hwy 2 to Jct Hwy 312
- No. 229 From Jct Hwy 9 to Jct Hwy 47
- No. 240 From Jct Hwy 55 to Prince Albert Ntl Park South  
Boundary\* (Winter secondary weights)
- No. 255 From Jct Hwy 55 to Tobin Lake
- No. 263 From Jct Hwy 2 to Prince Albert Ntl Park  
Boundary
- No. 264 From Jct Hwy 2 to Prince Albert Ntl Park  
Boundary
- No. 265 From Jct Hwy 120 to Jct Hwy 926
- No. 271 From Maple Creek to Fort Walsh
- No. 301 From Jct Hwy 1 to Buffalo Pound Park
- No. 302 From Prince Albert to 30 km W. of Prince Albert
- No. 303 From Jct Hwy 26 Turtleford to Jct Hwy 21
- No. 303 From Jct Hwy 21 to Jct Hwy 16
- No. 304 From Meadow Lake to Loon Lake

## WINTER WEIGHT SEASON 2024-2025

- No. 305 From Jct Hwy 11 to Jct Hwy 16  
No. 306 From Jct Hwy 35 to Riceton  
No. 306 From Riceton to Jct Hwy 6 \* (8 000 kgs year round)  
No. 307 From Jct Hwy 7 to Jct Hwy 21  
No. 309 From Rhein to Jct Hwy 9  
No. 310 From Ituna to Grid 743  
No. 310 From Grid 743 to Jct Hwy 16 \* (8 000 kgs year round)  
No. 310 From Foam Lake to Jct Hwy 5  
No. 310 From Balcarres to Ituna  
No. 312 From Jct Hwy 2 to Jct Hwy 12\* (Gabriel Dumont Bridge – secondary weights year round)  
No. 316 From Jct Hwy 16 to Jct Hwy 5  
No. 317 From Jct Hwy 7 to Jct Hwy 31  
No. 318 From Carnduff to Alida  
No. 320 From Jct Hwy 20 to Jct Hwy 2  
No. 321 From Liebenthal to Alberta Border  
No. 322 From Jct Hwy 20 to Jct Hwy 220  
No. 324 From Jct Hwy 378 to Mayfair  
No. 332 From Jct Hwy 32 to 7.1 km W. of Hwy 32\* (Max GVW 8 000 kgs)  
No. 334 From Jct Hwy 13 to Jct Hwy 39\* (Max GVW 8 000 kgs from Jct Hwy 13 to Avonlea)  
No. 335 From Arborfield to Gronlid  
No. 339 From Jct Hwy 334 to Jct Hwy 39\* (Max GVW 8 000 kgs except from 11.4km to 21.2km west of Jct Hwy 334)  
No. 340 From Jct Hwy 16 to Jct Hwy 40  
No. 342 From Jct Hwy 42 to Jct Hwy 4  
No. 342 From Grid 647 to Plato Access  
No. 343 From Jct Hwy 4 to Simmie  
No. 349 From Jct Hwy 38 to Archerwill  
No. 349 From Jct Hwy 35 to Jct Hwy 6  
No. 350 From U.S. Border to Torquay  
No. 354 From Jct Hwy 11 to Dilke  
No. 355 From Meath Park to Sturgeon Lake Reserve  
No. 357 From Togo to Jct Hwy 8  
No. 358 From Wood Mountain to Limerick  
No. 361 From Manitoba Border to Jct Hwy 47  
No. 363 From Moose Jaw to Old Wives  
No. 363 From Old Wives to Jct Hwy 4  
No. 364 From Jct Hwy 10 to Balgonie  
No. 365 From Watrous to Jct Hwy 16  
No. 367 From Jct Hwy 42 to Jct Hwy 19  
No. 368 From St. Brieux to Beatty  
No. 368 From Jct Hwy 5 to St. Brieux  
No. 369 From Jct Hwy 10 to Togo  
No. 373 From Jct Hwy 42 to Jct Hwy 45  
No. 374 From Jct Hwy 21 to Jct Hwy 14  
No. 376 From Jct Hwy 14 to Jct Hwy 324  
No. 378 From Jct Hwy 324 to Jct Hwy 3  
No. 378 From Jct Hwy 4 to Jct Hwy 324  
No. 377 From Jct Hwy 28 to Jct Hwy 6  
No. 379 From McMahon to Jct Hwy 4  
No. 381 From Manitoba Border to Jct Hwy 80  
No. 397 From Jct Hwy 16 to Allan  
No. 903 From Jct Hwy 55 to 74 km North of Jct Hwy 965  
No. 904 From Jct Hwy 4 to 30.18 km north of Jct Hwy 4  
No. 905 From Jct Hwy 102 to Shasko Bay \* (Max GVW 41 500 kgs)  
No. 908 From Jct Hwy 155 to Ile-a-la-Crosse  
No. 909 From Jct Hwy 155 to Turnor Lake  
No. 910 From Jct Hwy 165 to Besnard Lake  
No. 911 From Jct Hwy 106 to Deschambault Lake  
No. 912 From Jct Hwy 913 to Wapawekka Lake  
No. 913 From Jct Hwy 106 to Jct Hwy 912  
No. 913 From Jct Hwy 912 to Jct Hwy 120  
No. 914 From Jct Hwy 165 to Key Lake Minesite  
No. 916 From Jct Hwy 2 to Jct Hwy 924  
No. 915 From Jct Hwy 102 to Stanley Mission  
No. 918 From Jct Hwy 165 to Patuanak  
No. 919 From Jct Hwy 21 to Primrose Lake\* (Cold River Bridge - No winter weights on Bridge)  
No. 920 From Jct Hwy 106 to Jct Hwy 932  
No. 922 From Bodmin to Jct Hwy 916  
No. 924 From Jct Hwy 55 to Dore Lake  
No. 925 From Jct Hwy 155 to Michel  
No. 926 From Jct Hwy 120 to Jct Hwy 969  
No. 927 From Jct Hwy 912 to East Trout Lake  
No. 931 From Jct Hwy 926 to Jct Hwy 963  
No. 942 From Jct Hwy 55 to Roads End  
No. 943 From Jct Hwy 942 to Meetoos  
No. 945 From Jct Hwy 24 to Jct Hwy 943  
No. 946 From Jct Hwy 943 to Leoville Grid  
No. 950 From Jct Hwy 224 to Jct Hwy 21  
No. 951 From Jct Hwy 904 to Jct Hwy 903  
No. 953 From Jct Hwy 2 to Jct Hwy 263  
No. 955 From La Loche to Cluff Lake Mine \* (Douglas River Bridge - Max GVW 41 500 kgs)  
No. 956 From Jct Hwy 155 to Alberta Border  
No. 965 From Jct Hwy 155 to Jct Hwy 903  
No. 969 From Jct Hwy 2 to Jct Hwy 165  
No. 980 From Woody Lake Rd. N. of Arran to Armit  
No. 982 From Forest Boundary to Jct Hwy 9  
No. 983 From Jct Hwy 982 to Jct Hwy 9

## WINTER WEIGHT SEASON 2024-2025

The Winter Weight Season **is in effect** for the following Rural Municipalities. (RM's that have opted out of Winter Weights will not appear in the Order):

RM #	Name	RM #	Name	RM #	Name
1	ARGYLE	76	AUVERGNE	151	ROCANVILLE
2	MOUNT PLEASANT	77	WISE CREEK	152	SPY HILL
5	ESTEVAN	78	GRASSY CREEK	153	WILLOWDALE
6	CAMBRIA	79	ARLINGTON	154	ELCAPO
7	SOURIS VALLEY	92	WALPOLE	155	WOLSELEY
8	LAKE ALMA	93	WAWKEN	156	INDIAN HEAD
9	SURPRISE VALLEY	94	HAZELWOOD	157	SOUTH QU'APPELLE
10	HAPPY VALLEY	95	GOLDEN WEST	158	EDENWOLD
11	HART BUTTE	96	FILMORE	159	SHERWOOD
12	POPLAR VALLEY	97	WELLINGTON	160	PENSE
17	VAL MARIE	98	SCOTT	161	MOOSE JAW
18	LONE TREE	99	CALEDONIA	162	CARON
19	FRONTIER	100	ELMSTHORPE	163	WHEATLANDS
31	STORTHOAKS	101	TERRELL	164	CHAPLIN
32	RECIPROCITY	102	LAKE JOHNSTON	165	MORSE
34	BROWNING	103	SUTTON	167	SASKATCHEWAN LANDING
35	BENSON	104	GRAVELBOURG	168	RIVERSIDE
36	CYMRI	105	GLEN BAIN	169	PITTEVILLE
37	LOMOND	106	WHISKA CREEK	171	FOX VALLEY
38	LAURIER	107	LAC PELLETIER	181	LANGENBURG
39	THE GAP	108	BONE CREEK	184	GRAYSON
40	BENGOUGH	109	CARMICHAEL	185	MCLEOD
42	WILLOW BUNCH	121	MOOSOMIN	186	ABERNETHY
43	OLD POST	122	MARTIN	187	NORTH QU'APPELLE
44	WAVERLEY	123	SILVERWOOD	189	LUMSDEN
45	MANKOTA	124	KINGSLEY	190	DUFFERIN
46	GLEN MCPHERSON	125	CHESTER	191	MARQUIS
49	WHITE VALLEY	126	MONTMARTRE	193	EYEBROW
51	RENO	127	FRANCIS	194	ENFIELD
61	ANTLER	128	LAJORD	211	CHURCHBRIDGE
63	MOOSE MOUNTAIN	129	BRATT'S LAKE	213	SALTCOATS
64	BROCK	130	REDBURN	214	CANA
65	TECUMSEH	131	BAILDON	215	STANLEY
66	GRIFFIN	132	HILLSBOROUGH	216	TULLYMET
67	WEYBURN	133	RODGERS	217	LIPTON
68	BROKENSHELL	134	SHAMROCK	218	CUPAR
69	NORTON	135	LAWTONIA	219	LONGLAKETON
70	KEY WEST	136	COULEE	220	MCKILLOP
71	EXCEL	137	SWIFT CURRENT	221	SARINA
72	LAKE OF THE RIVERS	138	WEBB	222	CRAIK
73	STONEHENGE	139	GULL LAKE	223	HURON
74	WOOD RIVER	141	BIG STICK	224	MAPLE BUSH
75	PINTO CREEK	142	ENTERPRISE	225	CANAAN

## WINTER WEIGHT SEASON 2024-2025

226	VICTORY	308	BIG QUILL	381	GRASS LAKE
228	LACADENA	309	PRAIRIE ROSE	382	EYE HILL
229	MIRY CREEK	310	USBORNE	394	HUDSON BAY
230	CLINTWORTH	312	MORRIS	395	PORCUPINE
231	HAPYPLAND	313	LOST RIVER	397	BARRIER VALLEY
232	DEER FORKS	314	DUNDURN	398	PLEASANTDALE
241	CALDER	315	MONTROSE	399	LAKE LENORE
243	WALLACE	316	HARRIS	400	THREE LAKES
244	ORKNEY	317	MARRIOTT	401	HOODOO
245	GARRY	318	MOUNTAIN VIEW	402	FISH CREEK
246	ITUNA BON ACCORD	319	WINSLOW	403	ROSTHERN
247	KELLROSS	320	OAKDALE	404	LAIRD
248	TOUCHWOOD	321	PRAIRIEDALE	405	GREAT BEND
250	LAST MOUNTAIN VALLEY	322	ANTELOPE PARK	406	MAYFIELD
251	BIG ARM	331	LIVINGSTON	409	BUFFALO
252	ARM RIVER	333	CLAYTON	410	ROUND VALLEY
253	WILLNER	334	PREECEVILLE	411	SENLAC
254	LOREBURN	335	HAZEL DELL	426	BJORKDALE
255	COTEAU	336	SASMAN	427	TISDALE
256	KING GEORGE	337	LAKEVIEW	428	STAR CITY
257	MONET	338	LAKESIDE	429	FLETT'S SPRINGS
259	SNIPER LAKE	339	LEROY	430	INVERGORDON
260	NEWCOMBE	340	WOLVERINE	431	ST. LOUIS
261	CHESTERFIELD	341	VISCOUNT	434	BLAINE LAKE
271	COTE	342	COLONSAY	435	REDBERRY
273	SLIDING HILLS	343	BLUCHER	436	DOUGLAS
274	GOOD LAKE	344	CORMAN PARK	437	NORTH BATTLEFORD
275	INSINGER	345	VANSCOY	438	BATTLE RIVER
276	FOAM LAKE	346	PERDUE	440	HILLSDALE
277	EMERALD	347	BIGGAR	456	ARBORFIELD
279	MOUNT HOPE	349	GRANDVIEW	457	CONNAUGHT
280	WREFORD	350	MARIPOSA	459	KINISTINO
281	WOOD CREEK	351	PROGRESS	460	BIRCH HILLS
282	MCCRANEY	352	HEART'S HILL	461	PRINCE ALBERT
283	ROSEDALE	366	KELVINGTON	463	DUCK LAKE
284	RUDY	368	SPALDING	464	LEASK
285	FERTILE VALLEY	369	ST. PETER	466	MEETING LAKE
286	MILDEN	370	HUMBOLDT	467	ROUND HILL
287	ST. ANDREWS	371	BAYNE	468	MEOTA
288	PLEASANT VALLEY	372	GRANT	469	TURTLE RIVER
292	MILTON	373	ABERDEEN	470	PAYNTON
301	ST. PHILIPS	376	EAGLE CREEK	471	ELDON
303	KEYS	377	GLENSIDE	486	MOOSE RANGE
304	BUCHANAN	378	ROSEMOUNT	487	NIPAWIN
305	INVERMAY	379	REFORD	488	TORCH RIVER
307	ELFROS	380	TRAMPING LAKE	490	GARDEN RIVER

## WINTER WEIGHT SEASON 2024-2025

491	BUCKLAND	498	PARKDALE	561	LOON LAKE
493	SHELLBROOK	501	FRENCHMAN BUTTE	588	MEADOW LAKE
494	CANWOOD	520	PADDOCKWOOD	622	BEAVER RIVER
496	SPIRITWOOD	521	DISTRICT OF LAKELAND		
497	MEDSTEAD	555	BIG RIVER		

**NOTE: VARIOUS PROVINCIAL HIGHWAYS AND BRIDGES ARE SUBJECT TO SPECIAL REDUCED OR RESTRICTED WEIGHTS AND SOME ARE FOR SPECIFIC PERIODS OF THE YEAR, SOME FOR PRECISE TEMPERATURES. A DETAILED DESCRIPTION OF THESE SPECIAL RESTRICTIONS IS LISTED ON THE FOLLOWING PAGES OF THIS ORDER.**

## WINTER WEIGHT SEASON 2024-2025

The following section is not part of the Order but is appended as INFORMATION:

Special Weight Restrictions on Selected Provincial Highways.

The following highways are subject to reduced weights, year round, by regulation in accordance with the *Vehicle Weight and Dimension Regulations, 2010*

Hwy	From	To	Description
955	South abutment of the Douglas River Bridge	Northern most limit of Highway 955	Maximum GVW 41 500 kg

The following BRIDGES are restricted by Minister's ORDER to a maximum gross vehicle weight of Secondary Weights year-round. Winter Weights are not allowed.

Hwy	Bridge Location Description
2	Bridge over Little Red River from Southern Bridge Abutment to Northern Bridge Abutment. Bridge is located approximately 4.4 km south of Jct. with Hwy 355 and Hwy 2 near Spruce Home. <b>Bridge is located on East Frontage Road.</b>
3	Bridge over Red Deer River from Eastern Bridge Abutment to Western Bridge Abutment located approximately .5km west of Erwood, Sk.
4 Metinota Access	Bridge over Jackfish Narrows from Eastern Bridge Abutment to Western Bridge Abutment. Bridge is located in access road approximately 3.1km west of the Jct. with Hwy 4. <b>Bridge is located on access road.</b>
312 Gabriel Dumont Bridge	Truss Bridge over South Saskatchewan River from Eastern Bridge Abutment to Western Bridge Abutment.
334	Bridge over Willow Creek from Eastern Bridge Abutment to Western Bridge Abutment. Bridge is located approximately 18.6 km east of Avonlea, sk. and the Jct. with Hwy 339 and Hwy 334.
919	Bridge over Martineau River from Southern Bridge Abutment to Northern Bridge Abutment. Bridge is located approximately 39.5km northwest of the Jct. with Hwy 21 and Hwy 950
935	Bridge over Morin River from the Southern Bridge Abutment to the Northern Bridge Abutment. Bridge is located approximately 7km north of the Jct. with Hwy 165 and Hwy 935.
955 Clearwater Truss Bridge	Truss Bridge over Clearwater River from Southern Bridge Abutment to Northern Bridge Abutment. Bridge is located approximately - 62 km north of Jct 155 and 955 to the Clearwater Bridge.
980 Elbow Lake Access	Bridge over Midnight Creek from Eastern Bridge Abutment to Western Bridge Abutment. Bridge is located approximately .3 km west of Elbow Lake, Sk.. <b>The bridge is located on Spirit Lake/Elbow Lake access road.</b>

The following BRIDGES are restricted by Minister's ORDER to a maximum gross vehicle weight of Primary Weights year-round. Winter Weights are not allowed.

Hwy	Bridge Location Description
2	Northbound Bridge over Hwy 1 from Southern Bridge Abutment to Northern Bridge Abutment. Bridge is located North of Moose Jaw at Jtc. with Hwy 1 and Hwy 2
2	Southbound Bridge over Hwy 1 from Southern Bridge Abutment to Northern Bridge Abutment. Bridge is located north of Moose Jaw Sk. at Jtc. with Hwy 1 and Hwy 2
6	Bridge over Barrier River Overflow from Southern Bridge Abutment to Northern Bridge Abutment. Bridge is located approximately 25.7 km south of Melfort, Sk.



## WINTER WEIGHT SEASON 2024-2025

The following highways are restricted by Minister's ORDER to a maximum gross vehicle weight of 8 000 kilograms year round.

Highway	From	To
1 Caron Access	Jct Hwy 1	Hamlet of Caron
1 Grand Coulee Access	Jct Hwy 1	Village of Grand Coulee
2 Eastside Service Road near Prince Albert	Jct Boundary Street East Service Rd north	Jct Township Road (approx. 2.4 kms)
4 Blumenhof Access	Jct Hwy 4 east	Blumenhof
6 Leroy Access	Jct Hwy 6	Town of Leroy
8 Tantallon Access	Jct. Hwy 8	Village of Tantallon
12 Hepburn Access	Jct. Hwy 12	Village of Hepburn
12 Waldheim Access	Jct. Hwy 12	100 meters west of the west boundary of NW 15-42-5 W3M in the town of Waldheim.
13 Bellegarde Access	Jct. Hwy 13	Bellegarde
13 Forget Access	Jct. Hwy 13	The Village of Forget
15	Jct. Hwy 16	Jct. Hwy 9
16 Bradwell Access	Jct. Hwy 16	Village of Bradwell
21 Mendham Access	Jct Hwy 21 Mendham Access	Intersection with the North-South portion of the Municipal Alternate Truck Route
30	Eston Regional Park located at the southwest corner of Section 20, Township 23, Range 20, West 3rd Meridian	The jct. of municipal Hwy located at the north-east corner of Section 34, Township 28, Range 20, West 3rd Meridian
31	Jct. Hwy 4	Herschel Access Road
31	Grid 656 at NW corner of Section 34, Township 31, Range 17, west of the 3rd Meridian	The intersection of the Plenty grid at the NW corner, Section 21, Township 32, Range 19, west of the 3rd Meridian
39 Bienfait Access	Jct Hwy 39	Jct Hwy 18 (In the Town of Bienfait)
40 David Laird Campsite Road	Jct No. Hwy 40	Jct Hwy No. 16
41 Alvena Access	Jct Hwy 41	2nd Avenue in Village of Alvena
42	Jct Hwy 42 - Keeler Service Road/Railway Ave. S.	Keeler Service Road/Railway Ave. to RM Road 643
42 (1)	Jct Hwy 373	Jct Hwy 45 in the Town of Lucky Lake
42	From its Jct with Hwy 44 (km 43.68)	its Jct with Hwy 15 (km 59.92), for a total of 16.2 km.

## WINTER WEIGHT SEASON 2024-2025

44(1)	Jct Hwy 19	Junction with the Danielson Provincial Park Access located in the southeast of Section 32, Township 26, Range 6, West of the 3rd Meridian.
44(1)	Jct Hwy 21	Westerly to the Jct with the municipal road located in the NE 1/4 of Section 24, Township 26, Range 27, west of the 3rd Meridian
44(1)	Jct with the municipal road located at the SW 1/4 of Section 26, Township 26, Range 27, west of the 3rd Meridian	Jct with the municipal road located east of Section 31, Township 26, Range 27, west of the 3rd Meridian
306	Riceton	Jct Hwy 6
308	Jct Hwy 8	Jct with Primary Grid 600
310	Jct of Grid 743	Jct of Hwy No. 16
312 Laird Access	Jct Hwy 312	The Village of Laird
332	7.1 km west of Jct Hwy 32	The Village of Hazlet except for that portion between the east and west Jct of Hwy 37
334	Jct Hwy 13	3.3 km south of Jct Hwy 339
339	Village of Avonlea	Jct. of Hwy 39 except for that portion from 11.4 km west of Avonlea to 21.2 km west of Avonlea
342	Jct Hwy 4	Jct of Primary Grid 647 north of Lacadena
371	Jct Hwy 21	Alberta Border

The following highways are restricted by Minister's ORDER to a maximum gross vehicle weight of 8 000 kilograms from March 1<sup>st</sup> to November 30<sup>th</sup> each year.

Hwy	From	To
302	Cecil Ferry Road at the SE corner of Section 22, Township 48, Range 24, west of the 2nd Meridian	Jct of the municipal road located at SE corner of Section 5, Township 49, Range 22, west of second Meridian (located by the Weldon Ferry)

The following access road is restricted by Minister's ORDER to a maximum gross vehicle weight of 8 000 kilograms from March 1<sup>st</sup> to November 30<sup>th</sup> each year.

Hwy	From	To
2 Paddockwood Access	Jct Hwy 2	Grid Road intersection NE Section 23, Township 52, Range 25, W2nd Meridian

## WINTER WEIGHT SEASON 2024-2025

The following highway is restricted by Minister's ORDER to a maximum gross vehicle weight of 8 000 kilograms from March 15<sup>th</sup> to November 15<sup>th</sup> each year and *when the ambient temperature is above -6°C*.

Hwy	From	To
8	0.5 km North of Junction Highway 49 at Norquay	The community of Swan Plain at the south boundary of SE 27-36-1-W2M

The following Access Road is restricted by Minister's ORDER to a maximum gross vehicle weight of 8 000 kilograms from February 24 to November 15<sup>th</sup> each year and *when the ambient temperature is above -6°C*.

Hwy	From	To
35 Aylsham Access	Hwy 35 (NW corner of section 32, township 48, range 14, west of second Meridian)	Aylsham (NE corner of section 34, township 48, range 13, west of second Meridian)

The following highway is restricted by Minister's ORDER to a maximum gross vehicle weight of 75% of primary highway weights, except during winter weight season, when winter secondary weights shall apply.

Hwy	From	To
240	Junction Highway 55	No. 240 - From Jct Hwy 55 to Prince Albert National Park SPECIAL RESTRICTIONS – 4.5 kg per mm (252 lbs/in) width of tire (manufacturer's stamped dimension) on any wheel to a maximum GVW of 22,686 kg (50,000 lbs), including the steering axle.

The following highway has a Temporary Road Closure by Minister's ORDER from December 15<sup>th</sup> to April 1<sup>st</sup> of the following year.

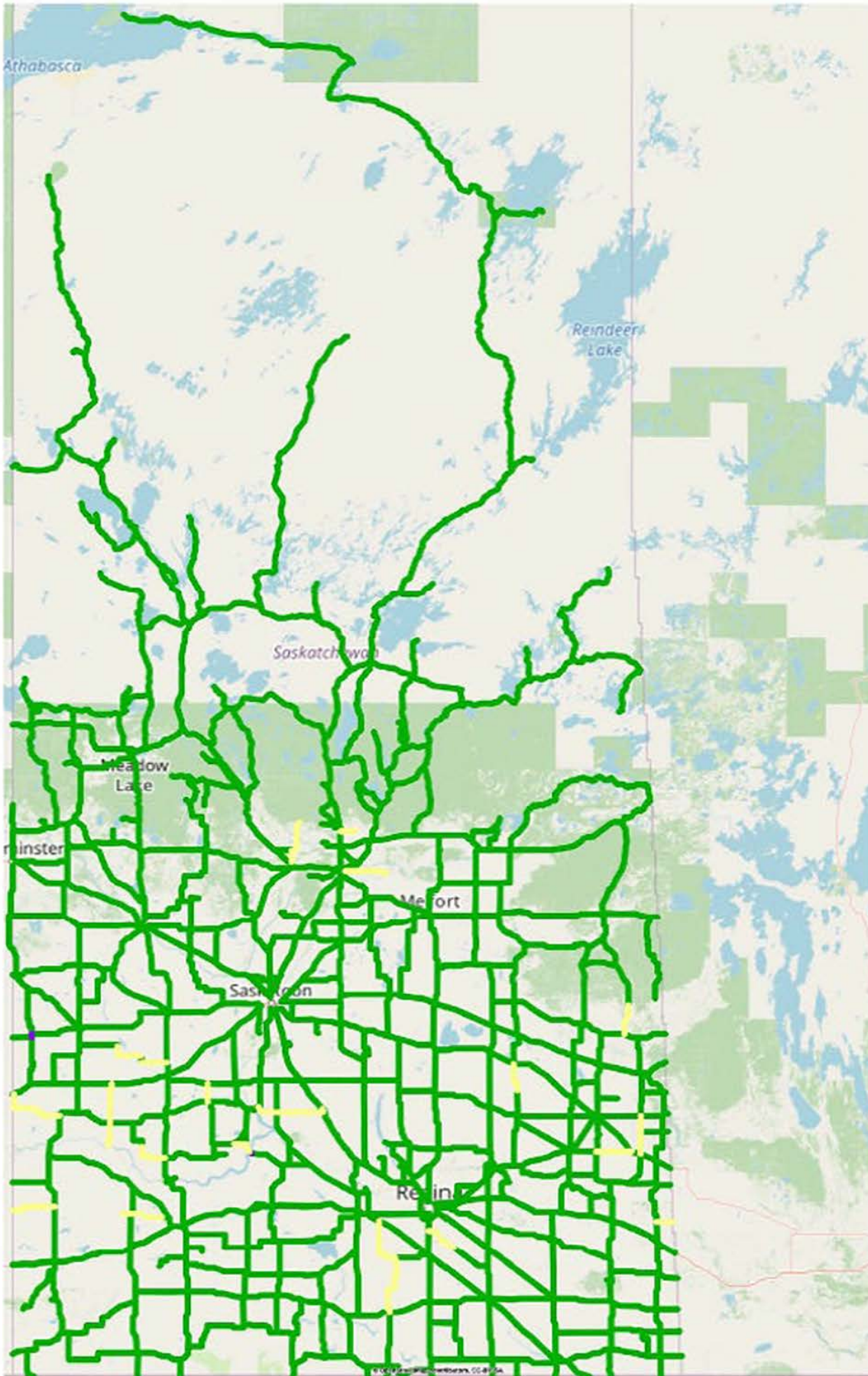
Hwy	From	To
271	Within the boundaries of Cypress Hills Provincial Park West Block	

For detailed information on Rural Roads, call the local rural municipality or for Provincial Highway information email the Highway Hotline [hotline@gov.sk.ca](mailto:hotline@gov.sk.ca). The rural municipality administers and maintains the alternate haul routes. They are also responsible for issuing any overweight permits associated with the alternate haul routes.

Saskatchewan Ministry of Highways and Infrastructure provides seasonal highway restriction information on the Internet at: <http://www.saskatchewan.ca/truckingweights> under Special Weights.

Truckers can also contact the Saskatchewan Ministry of Highways, Trucking inquiry line at Toll free in Saskatchewan: 1-866-933-5290 Out of Saskatchewan: 306-933-5290 email: [mhitrucking@gov.sk.ca](mailto:mhitrucking@gov.sk.ca)

Saskatchewan 🚧 Winter Weight Order 28



**Winter Weight Season**

- █ In Effect
- █ Not In Effect
- █ Future Restrictions

**Spring Weight Season**

- █ No Restrictions
- █ Restricted
- █ Future Restrictions

**Special Weight Restrictions**

- █ Special Weight Restrictions

**Notes**  
 Winter Weights are in effect (green)